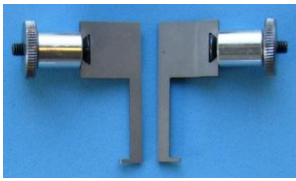
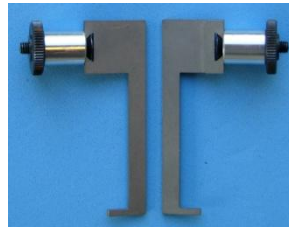


FMS MEASUREMENT INSERTS (other than screw threads)



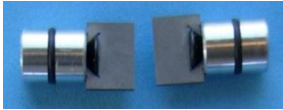
61A

FMS insert 61A is for measuring internal recesses and holes from $\varnothing 5\text{mm} / 0.2''$ up to a depth of $2.5\text{mm} / 0.1''$ (each side) and a depth length of $\text{max. } 15\text{mm} / 0.6''$.



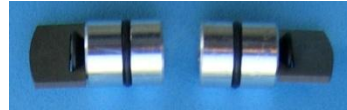
61B

FMS insert 61B is for measuring internal recesses and holes from $\varnothing 10\text{mm} / 0.4''$ up to a depth of $5\text{mm} / 0.2''$ (each side) and a depth length of $\text{max. } 30\text{mm} / 1.2''$.



60A

FMS insert 60A is for measuring external recesses with min. width of $1\text{mm} / 0.04''$ up to a depth of $5\text{mm} / 0.2''$ on each side of the recess. i.e. OD 100mm and recess diameter 90mm .



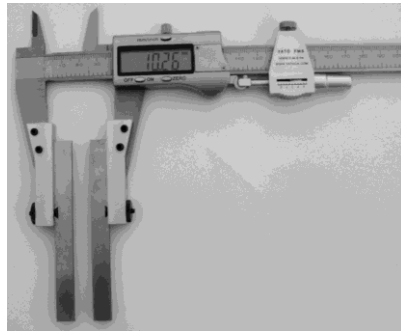
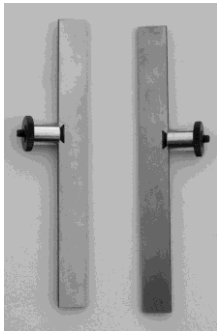
61C

FMS insert 60A is for measuring external recesses with min. width of $1\text{mm} / 0.04''$ up to a depth of $5\text{mm} / 0.2''$ on each side of the recess. i.e. OD 100mm and recess diameter 90mm .



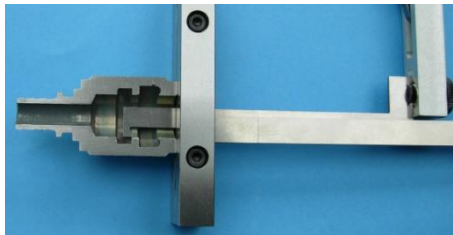
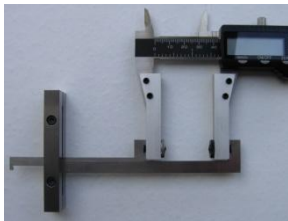
FMS recess and groove inserts can be made to order for almost all shapes both for external and internal measurement. Delivery time is usually less than 3 work weeks from date of order.

60A, 61A, 61B and 61C are standard and can usually be sent the day after an order is received.

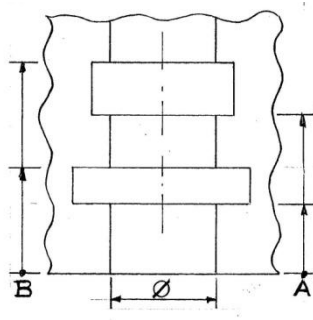
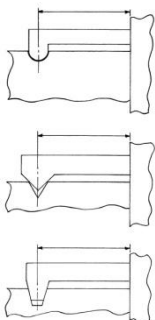


As can be seen FMS recess inserts can be made for all recess diameters at large depths and small widths.

Recess and groove depth. Front, center or rear.



Attachments and accessories can be made to measure external and internal recess and groove depth.



To have special inserts made simply give the relevant information and you will receive a quote plus delivery time.

WWW.F-M-S.DK